

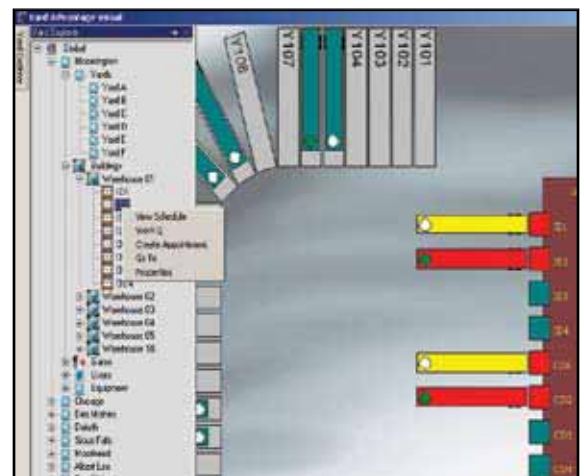


HighJump Yard Advantage

Conquering the Complexity of Yard Operations

Today's reality is this: warehouse efficiency has a direct correlation to inventory optimization throughout the supply chain. Accomplishing this requires you to truly maximize inventory flow not only inside your warehouse, but also as inventory enters and leaves the yard outside. Additionally, you must consider the impact of high fuel prices, facility security and hours of service regulations as you strive to control costs and ship orders on time. If you are still relying on manual processes, optimizing your yard can be a logistical nightmare. That's why it's common to see inefficiencies such as materials stacked in staging lanes, dock workers standing around waiting for trailers to arrive, or staff searching for seemingly lost equipment.

To transform this chaos into competitive advantage, you require real-time information, intelligent work direction and complete visibility of trucks, trailers, drivers, goods and materials—from the moment they arrive at the gate to the moment they leave your facility. To do this, you need the HighJump™ Yard Advantage solution.



HighJump Yard Advantage's graphical interface displays all trailers in the yard and features drag-and-drop functionality to convert on-screen changes into assigned work orders.

HighJump Yard Advantage—Increase Productivity and Reduce Costs

HighJump Yard Advantage is much more than just a tracking system. This powerful solution features graphical yard management, yard security, inventory visibility, dynamic appointment scheduling and real-time location tracking of trailers across multiple yards. Once a trailer is checked in at the gate, the driver is directed, based on your business rules, to take the trailer to a specific yard or door location for loading/unloading. HighJump Yard Advantage manages your docks to speed the flow of goods and materials into and out of your facilities. With advanced tracking and dynamic appointment scheduling capabilities, you will never lose the location of trailers or double book docks again, even if circumstances change at the last minute.



Complete Visibility and Tracking

With HighJump Yard Advantage's graphical interface, you can manage yard transactions easily. Drag-and-drop functionality converts on-screen trailer moves into RF-directed work for yard drivers. At-a-glance symbols also display key information such as trailer type, status, disposition, ownership, which trailers are damaged/out of service, and fuel remaining in refrigerated vehicles. Additionally, RFID-based, real-time location tracking enables you to track the destination of trailers and other equipment, no matter where it ends up in the yard. This automates and streamlines workflows while providing you with the exact position of items in the yard, eliminating time-consuming searches for misplaced trailers.

Manage Your Yard Like a Pro

Even with the best technology, a yard cannot manage itself. HighJump Yard Advantage provides a wealth of insightful data and reporting capabilities, enabling more informed decisions about inventory deployment. HighJump Yard Advantage also gives you the capability to manage several yards at one time, whether they are in one location or across the country.

With a detailed audit trail you will have the information you need on available goods and materials. You will also have the ability to identify the root causes of problems and run reports on carriers to evaluate a wide range of performance parameters (e.g., on-time delivery). More importantly, if HighJump Yard Advantage is integrated into your warehouse management system, you can identify inventory shortages and take advantage of cross-docking opportunities to keep shipments on schedule and customer satisfaction high.

A Key Component of the HighJump Supply Chain Execution Suite

HighJump Yard Advantage is available as a stand-alone solution or as part of the comprehensive, RFID-ready HighJump Supply Chain Advantage suite. These solutions offer a high level of configurability, allowing you to change workflows easily in order to optimize productivity and meet shifting order demand. No expensive, time-consuming custom code is required to configure your system to meet your unique needs, which makes upgrades fast and cost-effective. This helps you support the growth in your business. It also helps ensure a strong return on investment and low total cost of system ownership.

Features	Benefits
Graphical interface	<ul style="list-style-type: none">• Maximize labor efficiency• Achieve accurate snapshot of yard contents
Real-time location tracking	<ul style="list-style-type: none">• Capture accurate equipment locations• Eliminate time-consuming searches
Dynamic appointment scheduling	<ul style="list-style-type: none">• Adjust dock schedule quickly as needed
Real-time visibility	<ul style="list-style-type: none">• Improve decision-making• Maximize cross-docking opportunities• Achieve superior management control• Manage multiple yards with ease
Inventory accuracy	<ul style="list-style-type: none">• Reduce shrinkage and spoilage• Avoid costly errors• Reduce backorders and stock-outs• Fill customer orders accurately, on time

